

GUARDRAILS

509.1 The top of guardrails may be 36 inches (914 mm) in height.

3. The top of guardrails for stairways, exclusive of their landings, may have a height as specified in Section 1003.3.3.6 for handrails.

509.3 Openings. Open guardrails shall have intermediate rails or an ornamental pattern such that a sphere 4 inches (102 mm) in diameter cannot pass through.

2. The triangular openings formed by the riser, tread and bottom element of a guardrail at the open side of a stairway may be of such size that a sphere 6 inches (152 mm) in diameter cannot pass through.

STAIRS

1003.3.3.2 Width. Stairways serving an occupant load less than 50 shall not be less than 36 inches (914 mm) in width. Handrails may project into the required width a distance of 31/2 inches (89 mm) from each side of a stairway. Stringers and other projections such as trim and similar decorative features may project into the required width 1/2 inches (38 mm) from each side.

1003.3.3.3 Rise and run 8-inch-maximum (203 mm) rise and a 9-inch-minimum (229 mm) run. The greatest riser height within any flight of stairs shall not exceed the smallest by more than 3/8 inch (9.5 mm). Except as permitted in Sections 1003.3.3.8.1, 1003.3.3.8.2 and 1003.3.3.8.3, Stair treads shall be of uniform size and shape, except the largest tread run within any flight of stairs shall not exceed the smallest by more than 3/8 inch (9.5 mm).

2. Where the bottom or top riser adjoins a sloping public way, walk or driveway having an established grade (other than natural earth) and serving as a landing, the bottom or top riser may be reduced along the slope to less than 4 inches (102 mm) in height with the variation in height of the bottom or top riser not to exceed 1 unit vertical in 12 units horizontal (8.3% slope) of stairway width.

1003.3.3.4 Headroom. Every stairway shall have a headroom clearance of not less than 6 feet 8 inches (2032 mm). Such clearances shall be measured vertically from a plane parallel and tangent to the stairway tread nosings to the soffit or other construction above at all points.

1003.3.3.5 Landings. There shall be a floor or a landing at the top and bottom of each stairway or stair run. Every landing shall have a dimension measured in the direction of travel not less than the width of the stairway. Such dimension need not exceed 44 inches (1118 mm) where the stair has a straight run. At least one intermediate landing shall be provided for each 12 feet (3658 mm) of vertical stairway rise measured between the horizontal planes of adjacent landings. Landings shall be level except that exterior landings may have a slope not to exceed 1/4 unit vertical in 12 units horizontal (2% slope). For landings with adjoining doors, see Section 1003.3.1.7. EXCEPTIONS: 1. In Group R, Division 3, and Group U Occupancies and within individual units of Group R, Division 1 Occupancies, such length need not exceed 36 inches (914 mm) where the stair has a straight run. 2. Stairs serving an unoccupied roof are exempt from these requirements.

1003.3.3.6 Handrails. Stairways shall have handrails on each side, and every stairway required to be more than 88 inches (2235 mm) in width shall be provided with not less than one intermediate handrail for each 88 inches (2235 mm) of required width. Intermediate handrails shall be spaced approximately equally across with the entire width of the stairway. EXCEPTIONS: 1. Stairways less than 44 inches (1118 mm) in width or stairways serving one individual dwelling unit in Group R, Division 1 or 3 Occupancy or a Group R, Division 3 congregate residence may have one handrail.

2. Private stairways 30 inches (762 mm) or less in height may have a handrail on one side only. 3. Stairways having less than four risers and serving one individual dwelling unit in Group R, Division 1 or 3, or a Group R, Division 3 congregate residence or Group U Occupancies need not have handrails. The top of handrails and handrail extensions shall not be placed less than 34 inches (864 mm) nor more than 38 inches (965 mm) above landings and the nosing of treads. Handrails shall be continuous the full length of the stairs and at least one handrail shall extend in the direction of the stair run not less than 12 inches (305 mm) beyond the top riser nor less than 12 inches (305 mm) beyond the bottom riser. Ends shall be returned or shall have rounded terminations or bends. EXCEPTIONS: 1. Private stairways do not require handrail extensions.

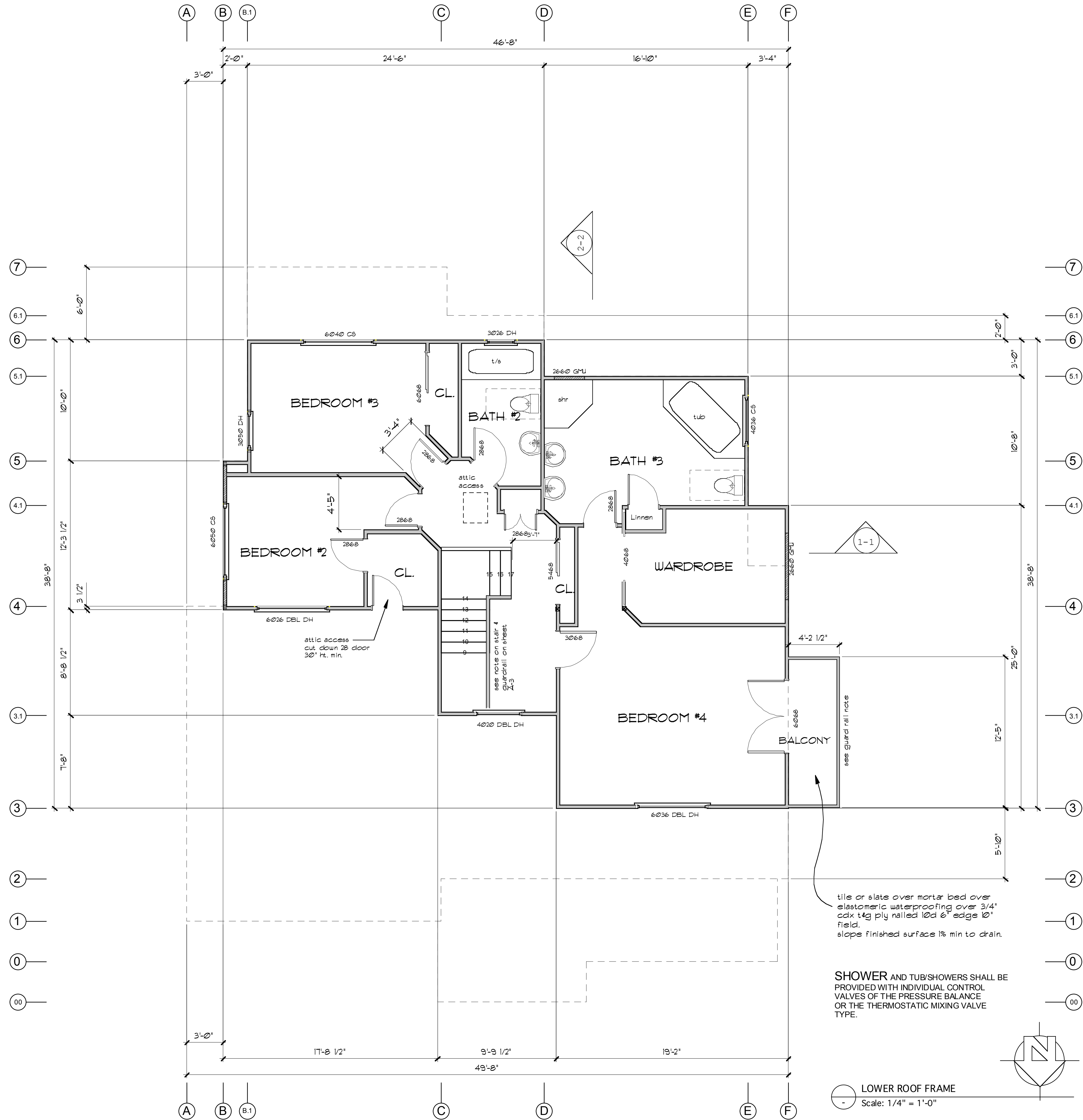
2. Handrails may have starting or volute newels within the first tread on stairways in Group R, Division 3 Occupancies and within individual dwelling units of Group R, Division 1 Occupancies. The handgrip portion of handrails shall not be less than 1 1/4 inches (32 mm) nor more than 2 inches (51 mm) in cross-sectional dimension or the shape shall provide an equivalent gripping surface. The handgrip portion of handrails shall have a smooth surface with no sharp corners. Handrails projecting from a wall shall have a space of not less than 1 1/2 inches (38 mm) between the wall and the handrail.

1003.3.3.7 Guardrails. Stairways open on one or both sides shall have guardrails as required by Section 509.

SPECIAL NOTE:
INSTALLATION INSTRUCTIONS FOR ALL LISTED EQUIPMENT SHALL BE PROVIDED TO THE FILED INSPECTOR AT TIME OF INSPECTION

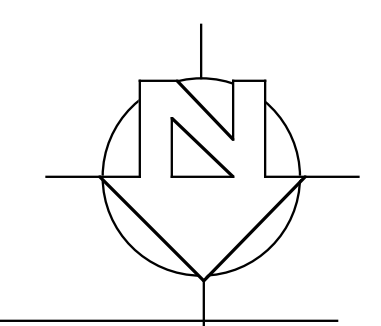
NOTE: ALL SHOWER HEADS TO BE 2.5 GPM MAXIMUM
WATER CLOSETS TO BE 1.6 GPM FLUSH MAXIMUM
KITCHEN FAUCET AERATORS 2.5 GPM MAX.
LAVATORY AERATORS 2.0 GPM MAX.
PRESSURE REDUCING VALVE BETWEEN METER AND FIRST POINT OF USE 60 PSI MAXIMUM.

SHOWER AND TUB/SHOWERS SHALL BE PROVIDED WITH INDIVIDUAL CONTROL VALVES OF THE PRESSURE BALANCE OR THE THERMOSTATIC MIXING VALVE TYPE.



SECOND FLOOR PLAN

LOWER ROOF FRAME
Scale: 1/4" = 1'-0"



A-3